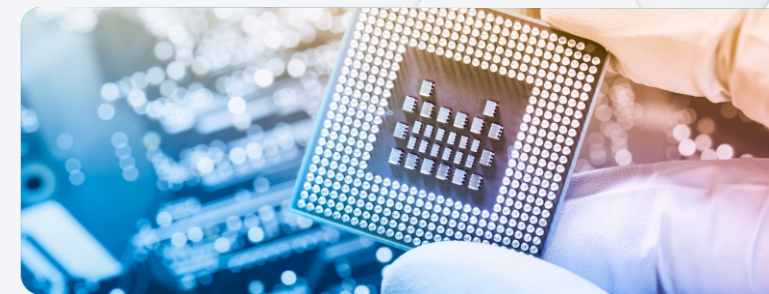
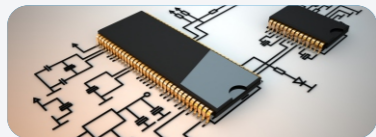
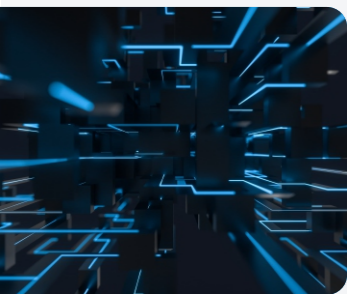
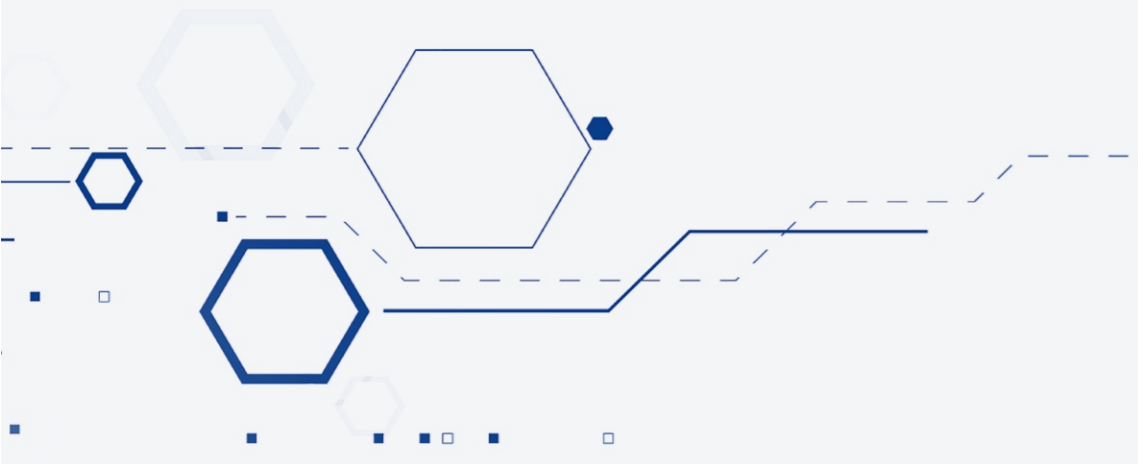




## MV & LV MOSFET CATALOG

Power Trench MOSFET  
Power SGT MOSFET  
Small Signal MOSFET



Wayon Electronics Co., Ltd.

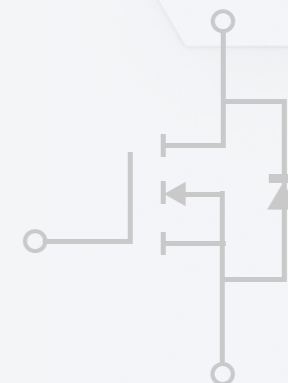
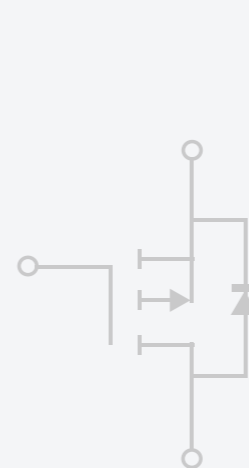
Te: +86-21-68960674

Fax: +86-21-50757680

E-mail: [market@way-on.com](mailto:market@way-on.com)

Website: <http://www.way-on.com>

Add: No.1001,Shiwan 7th Road,Shanghai 201207, P.R. China





维安目前拥有上海、西安、深圳、台湾四个实验室，上海总部实验室面积超过2000m<sup>2</sup>。实验室可以完成器件单体测试评估、汽车级可靠性测试、系统级应用测试验证及失效分析；主要设备包括TLP测试系统、半导体分析仪、ESD测试系统、雷击浪涌设备等器件及系统应用测试设备；温度循环、高压反偏、高温高湿、X-ray等可靠性及失效分析设备。实验室已取得UL-CDTP Lab.和TUV-TMPL Lab.认证。

WAYON currently has four laboratories in Shanghai, Xi'an, Shenzhen, and Taiwan, with a laboratory area of over 2,000 square meters at the Shanghai headquarters. The laboratory can complete device single test evaluation, automotive-level reliability test, system-level application test verification and failure analysis. The main equipment includes devices and system application test equipment such as TLP test system, semiconductor analyzer, ESD test system and lightning surge equipment; reliability and failure analysis equipment such as temperature cycling, high voltage reverse bias, high temperature and high humidity, X-ray, etc. The laboratory has obtained UL-CDTP Lab. and TUV-TMPL Lab. certifications.



上海维安电子 (WAYON) 成立于1996年，总部位于上海浦东新区，专注于电路保护、功率半导体及IC产品技术研发。是全球少数几家掌握先进电路保护、功率半导体核心技术的供应商。

电路保护产品主要包括ESD&EOS、ESD&CM、PTVS、Thyristor及GDT，二十年以上的电路保护产品设计及应用经验，为客户提供专业可靠的产品解决方案，应用领域涵盖5G通讯、物联网、安防监控、消费类电子产品、汽车电子及工业控制等。

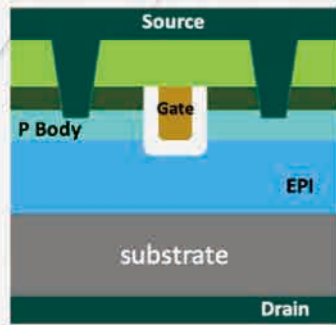
Wayon Electronics Co., Ltd. (WAYON), established in 1996 with headquarter located in Pudong New Area of Shanghai, is committed to the research and development of circuit protection, power semiconductor devices and IC product. It is one of the world's few suppliers of advanced circuit protection and power semiconductor core technology.

WAYON' s Circuit protection products mainly include ESD&EOS, ESD&CM, PTVS, Thyristor and GDT. With more than 20 years of experience in circuit protection product design and application, WAYON provides customers with professional and reliable product solutions for applications covering 5G communication, Internet of Things, security and surveillance, consumer electronics, automotive electronics, industrial control and etc.





**Trench MOSFET**



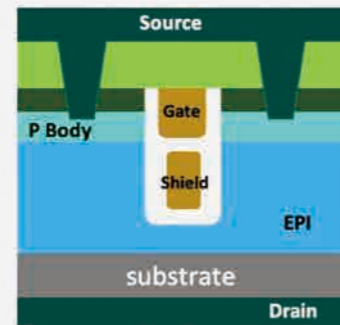
**Key Features**

- High cell density design
- Ideal for miniaturized packages
- G-S ESD protection embedded
- Voltage range: 12V-200V

**Main Applications**

- Load switch for wide range of applications
- Lithium battery protection
- Smart wear

**SGT MOSFET**



**Key Features**

- Advance shield gate trench technology
- Ultra low gate charge
- High power integration
- Voltage range: 30V-250V

**Main Applications**

- Hi-frequency SMPS
- Hi-Power motor control
- Power battery management

**CONTENTS**

**目录**

**01-13**

**-100V-250V Power MOSFET**

- 12V-100V Trench P Channel Power MOSFET
- 20V-250V Trench N Channel Power MOSFET
- 30V-250V SGT N Channel Power MOSFET
- Multi-Channel MOSFET Power MOSFET

**13-16**

**-60V-100V Small Signal MOSFET**

**17**

**Multi-Channel Small Signal MOSFET**



-100V-250V Power MOSFET

12V-100V Trench P Channel Power MOSFET

Part No.	Package	Configura tion	Type	ESD	V <sub>DS</sub>		I <sub>B</sub> at 25 °C	V <sub>GS</sub> (th)		R <sub>DS(on)</sub>		Ciss	Coss	Crss
					V	V <sub>GS</sub> Max		Typ.	V <sub>GS</sub> =10V	V <sub>GS</sub> =4.5V				
					V	V	A(Max.)	V	mΩ (Max.)	mΩ (Max.)	pF (Typ.)	pF (Typ.)	pF (Typ.)	
WMQ2P160R	DFN2*2-6L	Single	P	NO	-20	±10	-16	-0.6	/	17	2895	303	280	
WMQ55P02T1	PDFN3*3-8L	Single	P	NO	-20	±10	-55	-0.65	/	8.2	4550	542	505	
WMS15P02T1	SOP-8L	Single	P	NO	-20	±10	-15	-0.65	/	8.2	3138	602	565	
WMR12P02T1	DFN2*2-6L	Single	P	NO	-20	±10	-12	-0.65	/	22	1555	189	166	
WMB60P03TA	PDFN5*6-8L	Single	P	NO	-30	±20	-60	-1.6	9	14	3100	433	350	
WMQ50P03T1	PDFN3*3-8L	Single	P	NO	-30	±20	-50	-1.5	9	14	3958	440	341	
WMS14P03T1	SOP-8L	Single	P	NO	-30	±20	-14	-1.5	9.2	14	3758	445	325	
WMQ42P03T1	PDFN3*3-8L	Single	P	NO	-30	±20	-42	-1.5	14	22	2500	280	220	
WMO50P03T1	TO-252	Single	P	NO	-30	±20	-50	-1.7	14	22	2697	340	308	
WMS12P03T1	SOP-8L	Single	P	NO	-30	±20	-11.5	-1.5	15	25	2335	280	219	
WMQ3P115R	DFN2*2-6L	Single	P	NO	-30	±20	-11.5	-1.6	24	34	1410	180	153	
WMQ30P03T1	PDFN3*3-8L	Single	P	NO	-30	±20	-30	-1.5	24	35	1405	177	147	
WMS08P03T1	SOP-8L	Single	P	NO	-30	±20	-8	-1.5	28	38	1211	155	139	
WMQ25P03T1	PDFN3*3-8L	Single	P	NO	-30	±20	-25	-1.5	28	38	1211	155	139	
WMQ30P04T1	PDFN3*3-8L	Single	P	NO	-40	±20	-30	-1.6	13	20	3597	316	249	
WMS13P04T1	SOP-8L	Single	P	NO	-40	±20	-13	-1.6	13	20	3430	292	225	
WMO50P04T1	TO-252	Single	P	NO	-40	±20	-50	-1.6	13	20	3320	290	225	
WMS11P04T1	SOP-8L	Single	P	NO	-40	±20	-11	-1.5	20	25	1822	183	158	
WMO35P04T1	TO-252	Single	P	NO	-40	±20	-32	-1.5	20	25	1822	183	158	
WMB35P04T1	PDFN5*6-8L	Single	P	NO	-40	±20	-35	-1.5	20	25	1822	183	158	
WMQ25P04T1	PDFN3*3-8L	Single	P	NO	-40	±20	-25	-1.5	20	25	1822	183	158	
WMS06P04T1	SOP-8L	Single	P	NO	-40	±20	-6	-1.5	44	58	878	86	70	
WMO20P04T1	TO-252	Single	P	NO	-40	±20	-25	-1.5	44	58	878	86	70	
WMO18P04T1	TO-252	Single	P	NO	-40	±20	-18	-1.6	50	60	780	77	65	

12V-100V Trench P Channel Power MOSFET

Part No.	Package	Configura tion	Type	ESD	V <sub>DS</sub>		I <sub>B</sub> at 25 °C	V <sub>GS</sub> (th)		R <sub>DS(on)</sub>		Ciss	Coss	Crss
					V	V <sub>GS</sub> Max		Typ.	V <sub>GS</sub> =10V	V <sub>GS</sub> =4.5V				
					V	V	A(Max.)	V	mΩ (Max.)	mΩ (Max.)	pF (Typ.)	pF (Typ.)	pF (Typ.)	
WMQ25P06T1	PDFN3*3-8L	Single	P	NO	-60	±20	-25	-1.6	28	35	3135	200	121	
WMO35P06T1	TO-252	Single	P	NO	-60	±20	-35	-1.5	28	35	3135	200	121	
WMQ25P06T1	TO-252	Single	P	NO	-60	±20	-25	-1.7	40	55	1735	122	78	
WMS05P06T1	SOP-8L	Single	P	NO	-60	±20	-4.5	-1.6	90	128	1015	50	35	
WMO13P06T1	TO-252	Single	P	NO	-60	±20	-13	-1.6	90	128	1015	50	35	
WMQ12P10T1	PDFN3*3-8L	Single	P	NO	-100	±20	-12	-1.7	100	120	3010	86	60	
WMS05P10T1	SOP-8L	Single	P	NO	-100	±20	-5	-1.7	100	120	1093	113	8	
WMO18P10T1	TO-252	Single	P	NO	-100	±20	-18	-1.7	110	120	1080	112	9	

20V-250V Trench N Channel Power MOSFET

Part No.	Package	Configura tion	Type	ESD	V <sub>DS</sub>		I <sub>B</sub> at 25 °C	V <sub>GS</sub> (th)		R <sub>DS(on)</sub>		Ciss	Coss	Crss
					V	V <sub>GS</sub> Max		Typ.	V <sub>GS</sub> =10V	V <sub>GS</sub> =4.5V				
					V	V	A(Max.)	V	mΩ (Max.)	mΩ (Max.)	pF (Typ.)	pF (Typ.)	pF (Typ.)	
WMQ30N02T1	PDFN3*3-8L	Single	N	NO	20	±10	30	0.65	/	4.5	3850	490	440	
WMO90N02T1	TO-252	Single	N	NO	20	±10	90	0.65	/	4.5	3850	490	440	
WMR15N02T1	DFN2*2-6L	Single	N	NO	20	±10	15	0.65	/	6	2445	426	202	
WMO60N02T1	TO-252	Single	N	NO	20	±10	60	0.7	/	6	2280	300	270	
WMR09N02T1	DFN2*2-6L	Single	N	YES	20	±12	9	0.6	/	22	850	140	105	
WMB90N03T1	PDFN5*6-8L	Single	N	NO	30	±20	90	1.7	3	6	3300	505	420	
WMK180N03T1	TO-220	Single	N	NO	30	±20	180	1.6	3.2	6	3570	510	431	
WMO150N03T1	TO-252	Single	N	NO	30	±20	150	1.6	3.2	6	3570	510	431	
WMM180N03T1	TO-263	Single	N	NO	30	±20	180	1.6	3.2	6	3570	510	431	
WMQ80N03T1	PDFN3*3-8L	Single	N	NO	30	±20	80	1.7	4	6	2808	420	297	
WMB108N03T1	PDFN5*6-8L	Single	N	NO	30	±20	108	1.6	4	6	2912	416	289	
WMS15N03T1	SOP-8L	Single	N	NO	30	±20	15	1.7	4	6	2808	420	297	
WMO96N03T1	TO-252	Single	N	NO	30	±20	96	1.7	4	6	2808	420	297	



20V-250V Trench N Channel Power MOSFET

Part No.	Package	Configura tion	Type	ESD	V <sub>DS</sub>	V <sub>GS</sub> Max	I <sub>B</sub> at 25 °C	V <sub>GS</sub> (th)	R <sub>DS(on)</sub>		Ciss	Coss	Crss
								Typ.	V <sub>GS</sub> =10V	V <sub>GS</sub> =4.5V			
					V	V	A(Max.)	V	mΩ (Max.)	mΩ (Max.)	pF (Typ.)	pF (Typ.)	pF (Typ.)
WMQ40N03T1	PDFN3*3-8L	Single	N	NO	30	±20	40	1.7	5.5	9	1895	267	192
WMB81N03T1	PDFN5*6-8L	Single	N	NO	30	±20	81	1.7	5.5	9	1880	267	185
WMO80N03T1	TO-252	Single	N	NO	30	±20	80	1.7	5.5	9	1860	267	180
WMS13N03T1	SOP-8L	Single	N	NO	30	±20	13	1.7	6	9	1846	267	190
WMK75N03T1	TO-220	Single	N	NO	30	±20	75	1.6	6	9	1895	267	192
WMQ38N03T1	PDFN3*3-8L	Single	N	NO	30	±20	38	1.6	6.5	11	1220	232	122
WMB70N03T1	PDFN5*6-8L	Single	N	NO	30	±20	70	1.6	6.5	11	1220	232	122
WMS12N03TA	SOP-8L	Single	N	NO	30	±20	12.5	1.6	6.5	11	1220	232	122
WMK70N03T1	TO-220	Single	N	NO	30	±20	70	1.6	6.5	11	1220	232	122
WMO70N03T1	TO-252	Single	N	NO	30	±20	70	1.6	6.5	11	1220	232	122
WMR14N03TA	DFN2*2-6L	Single	N	NO	30	±20	13.8	1.6	7.2	10	1150	188	137
WMR14N03TB	DFN2*2-6L	Single	N	NO	30	±20	14	1.6	7.5	10.2	1130	188	137
WMQ46N03T1	PDFN3*3-8L	Single	N	NO	30	±20	46	1.5	8.5	13	1290	178	111
WMB58N03T1	PDFN5*6-8L	Single	N	NO	30	±20	58	1.7	8.5	14	1298	170	138
WMO55N03T1	TO-252	Single	N	NO	30	±20	55	1.6	8.5	12.5	1107	163	115
WMR12N03T1	DFN2*2-6L	Single	N	NO	30	±20	12	1.6	9	12.5	1250	174	142
WMR12N03TA	DFN2*2-6L	Single	N	NO	30	±20	12	1.6	9.5	13	1380	170	152
WMR13N03T1	DFN2*2-6L	Single	N	NO	30	±12	12.5	0.75	11	13.5	1850	150	124
WMR10N03T1	DFN2*2-6L	Single	N	NO	30	±20	10	1.75	12	16.5	842	126	83
WMQ37N03T1	PDFN3*3-8L	Single	N	NO	30	±20	37	1.7	12	16.5	830	131	85
WMB46N03T1	PDFN5*6-8L	Single	N	NO	30	±20	46	1.7	12	16.5	832	125	84
WM03N115A	SOP-8L	Single	N	NO	30	±20	11.5	1.5	12	16	1140	165	110
WMR07N03T1	DFN2*2-6L	Single	N	NO	30	±20	7	1.7	18	28	500	75	51
WMQ28N03T1	PDFN3*3-8L	Single	N	NO	30	±20	28	1.75	18	30	500	75	51
WM03N105A	SOP-8L	Single	N	NO	30	±20	10.5	1.75	23	32	511	77	55
WMT07N03T1	SOT-223	Single	N	NO	30	±20	7	1.5	36	45	500	72	58

20V-250V Trench N Channel Power MOSFET

Part No.	Package	Configura tion	Type	ESD	V <sub>DS</sub>	V <sub>GS</sub> Max	I <sub>B</sub> at 25 °C	V <sub>GS</sub> (th)	R <sub>DS(on)</sub>		Ciss	Coss	Crss
								Typ.	V <sub>GS</sub> =10V	V <sub>GS</sub> =4.5V			
					V	V	A(Max.)	V	mΩ (Max.)	mΩ (Max.)	pF (Typ.)	pF (Typ.)	pF (Typ.)
WMB70N04T1	PDFN5*6-8L	Single	N	NO	40	±20	70	1.5	6.5	8.5	3260	245	185
WMQ55N04T1	PDFN3*3-8L	Single	N	NO	40	±20	55	1.5	6.6	8.8	3310	280	209
WMO75N04T1	TO-252	Single	N	NO	40	±20	75	1.5	6.6	8.8	3310	280	209
WMK80N04T1	TO-220	Single	N	NO	40	±20	80	1.7	7	12	2400	192	160
WMO60N04T1	TO-252	Single	N	NO	40	±20	60	1.7	7	12	2400	192	160
WMQ50N04T1	PDFN3*3-8L	Single	N	NO	40	±20	50	1.7	7.5	14	2365	185	153
WMB56N04T1	PDFN5*6-8L	Single	N	NO	40	±20	56	1.75	7.6	15	2370	190	162
WMQ30N04TS	PDFN3*3-8L	Single	N	NO	40	±20	30	1.6	12.5	20	1230	135	110
WMB40N04TS	PDFN5*6-8L	Single	N	NO	40	±20	40	1.6	12.5	20	1230	135	110
WMS10N04TS	SOP-8L	Single	N	NO	40	±20	10	1.6	12.5	20	1230	135	110
WMO40N04TS	TO-252	Single	N	NO	40	±20	40	1.6	12.5	20	1230	135	110
WMQ26NV4T1	PDFN3*3-8L	Single	N	NO	45	±20	26	1.5	18	22.5	1090	92	78
WMS08NV4T1	SOP-8L	Single	N	NO	45	±20	8	1.5	18	22.5	1090	92	78
WMO26NV4T1	TO-252	Single	N	NO	45	±20	26	1.5	18	22.5	1090	92	78
WMO80N06T1	TO-252	Single	N	NO	60	±20	80	3	7.2	/	3692	263.2	218
WMK80N06T1	TO-220	Single	N	NO	60	±20	80	3	7.6	/	3692	263.2	218
WMB75N06T1	PDFN5*6-8L	Single	N	NO	60	±20	75	1.9	8.5	12	3307	201	151
WMS13N06T1	SOP-8L	Single	N	NO	60	±20	13	1.8	8.5	12	3307	201	151
WMQ44N06T1	PDFN3*3-8L	Single	N	NO	60	±20	44	1.8	12	15	2750	210	146
WMB52N06T1	PDFN5*6-8L	Single	N	NO	60	±20	52	1.7	12	15	2650	148	114
WMS10N06T1	SOP-8L	Single	N	NO	60	±20	10	1.7	12	15	2600	205	150
WMK50N06TS	TO-220	Single	N	NO	60	±20	50	1.7	16	20	2690	120	98
WMO50N06TS	TO-252	Single	N	NO	60	±20	50	1.9	16	20	2690	120	98
WMQ30N06TS	PDFN3*3-8L	Single	N	NO	60	±20	30	1.5	20	25	1900	165	123
WMS09N06TS	SOP-8L	Single	N	NO	60	±20	9	1.5	20	25	1900	165	123
WMO35N06T1	TO-252	Single	N	NO	60	±20	35	1.5	20	25	1900	165	123



20V-250V Trench N Channel Power MOSFET													
Part No.	Package	Configura tion	Type	ESD	V <sub>DS</sub>	V <sub>GS</sub> Max	I <sub>B</sub> at 25 °C	V <sub>GS</sub> (th)	R <sub>DS(on)</sub>		Ciss	Coss	Crss
					V	V	A(Max.)	V	V <sub>GS</sub> =10V	V <sub>GS</sub> =4.5V	pF	pF	pF
					(Typ.)	(Typ.)	(Max.)	(Max.)	(Typ.)	(Typ.)	(Typ.)	(Typ.)	(Typ.)
WMR07N06TS	DFN2*2-6L	Single	N	NO	60	±20	7	1.7	32	40	1355	60	49
WMQ20N06TS	PDFN3*3-8L	Single	N	NO	60	±20	25	1.7	32	40	1355	60	49
WMB26N06TS	PDFN5*6-8L	Single	N	NO	60	±20	25	1.7	32	40	1355	60	49
WMS08N06TS	SOP-8L	Single	N	NO	60	±20	8	1.7	32	40	1355	60	49
WMT07N06TS	SOT-223	Single	N	NO	60	±20	7	1.7	32	40	1355	60	49
WMK25N06TS	TO-220	Single	N	NO	60	±20	25	1.6	32	40	1355	60	49
WMO25N06TS	TO-252	Single	N	NO	60	±20	25	1.7	32	40	1355	60	49
WML18N06TS	TO-220F	Single	N	NO	60	±20	18	1.7	35	45	1325	59	49
WMB100N07TS	PDFN5*6-8L	Single	N	NO	70	±20	100	3	7	/	4030	271	189
WMK100N07TS	TO-220	Single	N	NO	70	±20	100	3	7	/	4030	271	189
WMO100N07T1	TO-252	Single	N	NO	70	±20	100	3	7	/	4030	271	189
WML100N07TS	TO-220F	Single	N	NO	70	±20	100	3	7.4	/	4030	271	189
WMK90N08TS	TO-220	Single	N	NO	80	±20	90	3	8.5	/	6450	270	220
WMM90N08TS	TO-263	Single	N	NO	80	±20	90	3	8.5	/	6495	270	220
WMK80N08TS	TO-220	Single	N	NO	80	±20	80	3	12	/	3980	262	158
WMO80N08TS	TO-252	Single	N	NO	80	±20	80	3	12	/	3980	262	158
WMM80N08TS	TO-263	Single	N	NO	80	±20	80	3	12	/	4150	220	157
WMLL029NV8HGS	TOLL	Single	N	NO	85	±20	240	3	3	/	8490	1400	83
WMS08N10T1	SOP-8L	Single	N	NO	100	±20	8	1.8	25	28	3208	106	81
WMK25N10T1	TO-220	Single	N	NO	100	±20	25	1.9	45	55	2332	61.5	50
WMO25N10T1	TO-252	Single	N	NO	100	±20	25	1.9	45	55	2332	61.5	50
WMS04N10T1	SOP-8L	Single	N	NO	100	±20	4	1.9	90	105	1100	55	40
WMO15N10T1	TO-252	Single	N	NO	100	±20	14.6	1.9	90	105	1220	53	42
WMT05N10T1	SOT-223	Single	N	NO	100	±20	5	2	100	110	1061	55	40
WMQ10N10TS	PDFN3*3-8L	Single	N	NO	100	±20	10	2	90	105	1133	32	26
WMT07N10TS	SOT-223	Single	N	NO	100	±20	6.8	1.5	88	96	1221	56	30

20V-250V Trench N Channel Power MOSFET													
Part No.	Package	Configura tion	Type	ESD	V <sub>DS</sub>	V <sub>GS</sub> Max	I <sub>B</sub> at 25 °C	V <sub>GS</sub> (th)	R <sub>DS(on)</sub>		Ciss	Coss	Crss
					V	V	A(Max.)	V	V <sub>GS</sub> =10V	V <sub>GS</sub> =4.5V	pF	pF	pF
					(Typ.)	(Typ.)	(Max.)	(Max.)	(Typ.)	(Typ.)	(Typ.)	(Typ.)	(Typ.)
WMK16N10T1	TO-220	Single	N	NO	100	±20	15.8	1.9	90	105	1100	55	40
WMO13N10TS	TO-252	Single	N	NO	100	±20	13	1.7	130	160	365	35	7
WMS04N10TS	SOP-8L	Single	N	NO	100	±20	3.7	1.7	130	160	365	35	7
WMT04N10TS	SOT-223	Single	N	NO	100	±20	3.7	1.7	130	160	365	35	7
WMO09N10T1	TO-252	Single	N	NO	100	±20	9	1.7	160	170	1077	46	32
WMO15N12TS	TO-252	Single	N	NO	120	±20	15	1.9	140	165	1211	55	31
WMT05N12TS	SOT-223	Single	N	NO	120	±20	5	1.9	80	105	2021	88	62
WMO28N15T2	TO-252	Single	N	NO	150	±20	28	3.2	48	/	512	75	11
WMK28N15T2	TO-220	Single	N	NO	150	±20	28	3.2	48	/	512	75	11
WMS06N15T2	SOP-8L	Single	N	NO	150	±20	5.8	3.1	50	/	518	75	13
WMO20N15T2	TO-252	Single	N	NO	150	±20	20	2	70	88	605	45.5	3
WMT04N15T1	SOT-223	Single	N	NO	150	±20	4	2	160	/	1130	53	37
WMO15N15T1	TO-252	Single	N	NO	150	±20	15	2	170	/	1130	53	37
WMO09N15T1	TO-252	Single	N	NO	150	±20	8.6	2	325	/	223	23	14
WMO18N20T2	TO-252	Single	N	NO	200	±20	18	2	130	150	534	30	7
WMO18N20T1	TO-252	Single	N	NO	200	±20	18	1.8	170	180	2370	95	65
WML15N25T2	TO-220F	Single	N	NO	250	±20	15	2	238	270	525	35	6.2
WMO15N25T2	TO-252	Single	N	NO	250	±20	15	2	238	270	496	21	6.2

30V-250V SGT N Channel Power MOSFET													
Part No.	Package	Configura tion	Type	ESD	V <sub>DS</sub>	V <sub>GS</sub> Max	I <sub>B</sub> at 25 °C	V <sub>GS</sub> (th)	R <sub>DS(on)</sub>		Ciss	Coss	Crss
					V	V	A(Max.)	V	V <sub>GS</sub> =10V	V <sub>GS</sub> =4.5V	pF	pF	pF
					(Typ.)	(Typ.)	(Max.)	(Max.)	(Typ.)	(Typ.)	(Typ.)	(Typ.)	(Typ.)
WMB017N03LG2	PDFN5*6-8L	Single	N	NO	30	±20	100	1.6	1.7	2.5	3500	1800	240
WMQ023N03LG2	PDFN3*3-8L	Single	N	NO	30	±20	75	1.7	3	4.5	2670	1480	158
WMB023N03LG2	PDFN5*6-8L	Single	N	NO	30	±20	83	1.7	2.3	3.6	2670	1480	158



30V-250V SGT N Channel Power MOSFET													
Part No.	Package	Configura tion	Type	ESD	V <sub>DS</sub>	V <sub>GS</sub> Max	I <sub>D</sub> at 25 °C	V <sub>GS</sub> (th)	R <sub>DS(on)</sub>		Ciss	Coss	Crss
					V	V	A(Max.)	V	V <sub>GS</sub> =10V	V <sub>GS</sub> =4.5V	pF (Typ.)	pF (Typ.)	pF (Typ.)
									mΩ (Max.)	mΩ (Max.)			
WMQ040N03LG2	PDFN3*3-8L	Single	N	NO	30	±20	43	1.6	4	6.2	1390	680	53
WMB040N03LG2	PDFN5*6-8L	Single	N	NO	30	±20	58	1.6	4	6.2	1390	680	53
WMQ052N03LG2	PDFN3*3-8L	Single	N	NO	30	±20	31	1.8	5.2	8.5	1035	575	41
WMB052N03LG2	PDFN5*6-8L	Single	N	NO	30	±20	50	1.8	5.2	8.2	1035	575	41
WMQ30N03T2	PDFN3*3-8L	Single	N	NO	30	±20	30	1.8	6.3	9	770	398	62
WMB52N03T2	PDFN5*6-8L	Single	N	NO	30	±20	52	1.7	6.3	9	850	400	60
WMQ080N03LG2	PDFN3*3-8L	Single	N	NO	30	±20	28	1.7	8	12	690	335	32
WMB080N03LG2	PDFN5*6-8L	Single	N	NO	30	±20	42	1.7	8	12	690	335	32
WMQ098N03LG2	PDFN3*3-8L	Single	N	NO	30	±20	26	1.7	9.8	15.6	570	250	27.5
WMB098N03LG2	PDFN5*6-8L	Single	N	NO	30	±20	38	1.7	9.8	15.6	570	250	27.5
WMB018N04LG2	PDFN5*6-8L	Single	N	NO	40	±20	130	1.7	1.8	2.6	3570	1050	115
WMS032N04LG2	SOP-8L	Single	N	NO	40	±20	22	1.85	3.2	5.2	2700	1050	45
WMQ032N04LG2	PDFN3*3-8L	Single	N	NO	40	±20	70	1.7	3.4	5.5	2705	960	55
WMB032N04LG2	PDFN5*6-8L	Single	N	NO	40	±20	90	1.7	3.2	5.2	2705	960	55
WMQ050N04LG2	PDFN3*3-8L	Single	N	NO	40	±20	60	1.6	5	8	2111	708	50
WMQ090N04LG2	PDFN3*3-8L	Single	N	NO	40	±20	40	1.6	9	15	830	247	32
WMB090N04LG2	PDFN5*6-8L	Single	N	NO	40	±20	50	1.6	9	15	788	305	62
WMS090N04LG2	SOP-8L	Single	N	NO	40	±20	14	1.6	9	15	830	247	41
WMB025N06LG2	PDFN5*6-8L	Single	N	NO	60	±20	158	1.6	2.8	3.8	6105	1128	75
WMK025N06LG2	TO-220	Single	N	NO	60	±20	200	1.6	2.8	3.8	6105	1128	75
WMB025N06HG2	PDFN5*6-8L	Single	N	NO	60	±20	160	3	3.2	/	4683	1192	69
WML025N06HG2	TO-220F	Single	N	NO	60	±20	180	3	3.2	/	4683	1192	69
WMK025N06HG2	TO-220	Single	N	NO	60	±20	200	3	3.2	/	4683	1192	69
WMM025N06HG2	TO-263	Single	N	NO	60	±20	200	3	3.2	/	4360	1075	32
WMM025N06HG2	TO-220F-NL	Single	N	NO	60	±20	180	3	3.2	/	4683	1192	89
WMB034N06LG4	PDFN5*6-8L	Single	N	NO	60	±20	125	1.7	3	4	4550	905	55

30V-250V SGT N Channel Power MOSFET													
Part No.	Package	Configura tion	Type	ESD	V <sub>DS</sub>	V <sub>GS</sub> Max	I <sub>D</sub> at 25 °C	V <sub>GS</sub> (th)	R <sub>DS(on)</sub>		Ciss	Coss	Crss
					V	V	A(Max.)	V	V <sub>GS</sub> =10V	V <sub>GS</sub> =4.5V	pF (Typ.)	pF (Typ.)	pF (Typ.)
									mΩ (Max.)	mΩ (Max.)			
WMK030N06LG4	TO-220	Single	N	NO	60	±20	125	1.7	3	4	4550	905	55
WMO030N06LG4	TO-252	Single	N	NO	60	±20	125	1.7	3.2	4.2	4550	905	50
WMB034N06HG4	PDFN5*6-8L	Single	N	NO	60	±20	125	3	3.2	/	5211	1124	50
WMK030N06HG4	TO-220	Single	N	NO	60	±20	125	3	3.2	/	5211	1124	50
WMM030N06HG4	TO-263	Single	N	NO	60	±20	125	3	3.2	/	5211	1124	50
WMO030N06HG4	TO-252	Single	N	NO	60	±20	125	3	3.4	/	5211	1124	50
WMB060N06LG2	PDFN5*6-8L	Single	N	NO	60	±20	75	1.7	6	7	2100	450	8
WMQ060N06LG2	PDFN3*3-8L	Single	N	NO	60	±20	65	1.7	6	7	2100	450	8
WMS060N06LG2	SOP-8L	Single	N	NO	60	±20	16	1.7	6	7	2100	450	8
WMO060N06LG2	TO-252	Single	N	NO	60	±20	85	1.6	6	7	2100	450	8
WMQ076N06LG2	PDFN3*3-8L	Single	N	NO	60	±20	60	1.6	7.6	11.8	1965	400	17.5
WMB076N06LG2	PDFN5*6-8L	Single	N	NO	60	±20	70	1.6	7.6	11.8	1965	400	17.5
WMO076N06LG2	TO-252	Single	N	NO	60	±20	80	1.6	7.6	11.8	1965	400	17.5
WMS076N06LG2	SOP-8L	Single	N	NO	60	±20	15	1.6	7.6	11.8	1965	400	17.5
WMS098N06LG2	SOP-8L	Single	N	NO	60	±20	13.7	1.7	9.8	15	937	428	31
WMQ098N06LG2	PDFN3*3-8L	Single	N	NO	60	±20	42	1.7	9.8	15	937	428	31
WMB098N06LG2	PDFN5*6-8L	Single	N	NO	60	±20	57	1.8	9.8	15	937	428	31
WMS048NV6LG2	SOP-8L	Single	N	NO	65	±20	17.5	1.6	5.5	7.6	1900	785	50
WMQ048NV6LG2	PDFN3*3-8L	Single	N	NO	65	±20	60	1.6	5.6	7.6	1995	785	51
WMB048NV6LG2	PDFN5*6-8L	Single	N	NO	65	±20	95	1.6	5.2	7.6	1995	785	51
WMQ048NV6HG2	PDFN3*3-8L	Single	N	NO	65	±20	60	3	5	/	2068	934	45
WMO048NV6LG2	TO-252	Single	N	NO	65	±20	90	1.6	5	7.3	2005	785	51
WMS048NV6HG2	SOP-8L	Single	N	NO	65	±20	17.5	3	5	/	2068	934	45
WMB048NV6HG2	PDFN5*6-8L	Single	N	NO	65	±20	95	3	5.2	/	2268	1034	45
WMM050NV6HG2	TO-263	Single	N	NO	65	±20	150	3	5	/	2368	1034	45
WMS090NV6LG2	SOP-8L	Single	N	NO	65	±20	14.5	1.7	9	14	1208	562	25



30V-250V SGT N Channel Power MOSFET													
Part No.	Package	Configura tion	Type	ESD	V <sub>DS</sub>	V <sub>GS</sub> Max	I <sub>D</sub> at 25 °C	V <sub>GS(th)</sub>	R <sub>DS(on)</sub>		Ciss	Coss	Crss
					V	V	A(Max.)	V	V <sub>GS=10V</sub>	V <sub>GS=4.5V</sub>	pF	pF	pF
					(Typ.)	(Max.)	(Max.)	(Typ.)	(Max.)	(Max.)	(Typ.)	(Typ.)	(Typ.)
WMQ090NV6LG2	PDFN3*3-8L	Single	N	NO	65	±20	45	1.8	9	13.5	1223	490	22
WMB090NV6LG2	PDFN5*6-8L	Single	N	NO	65	±20	62	1.7	9	13	1223	490	22
WMK040N08HGS	TO-220	Single	N	NO	80	±20	180	3	4.8	/	5235	985	58
WMM040N08HGS	TO-263	Single	N	NO	80	±20	180	3	4.8	/	5235	985	58
WMB040N08HGS	PDFN5*6-8L	Single	N	NO	80	±20	130	3	4	/	5235	985	58
WMQ060N08LG2	PDFN3*3-8L	Single	N	NO	80	±20	58	1.8	6.8	10.5	2426	437	16
WMB060N08LG2	PDFN5*6-8L	Single	N	NO	80	±20	98	1.8	6	8.2	2155	482	23
WMM053NV8HGS	TO-263	Single	N	NO	85	±20	125	3	5.5	/	4021	750	32
WMK053NV8HGS	TO-220	Single	N	NO	85	±20	125	3	5.5	/	4645	673	41
WMB053NV8HGS	PDFN5*6-8L	Single	N	NO	85	±20	100	3	5.6	/	4645	673	41
WMO053NV8HGS	TO-252	Single	N	NO	85	±20	118	3	6.2	/	4645	673	41
WMK028N10HG2	TO-220	Single	N	NO	100	±20	245	3	2.8	/	7735	1190	25
WMM028N10HG2	TO-263	Single	N	NO	100	±20	245	3	2.8	/	7735	1190	25
WMM028N10HGD	TO-263	Single	N	NO	100	±20	230	3	3	/	8998	1300	42
WMK028N10HGD	TO-220	Single	N	NO	100	±20	230	3	3	/	8998	1300	42
WMM043N10HGD	TO-263	Single	N	NO	100	±20	166	3	4.3	/	4236	854	33
WMK043N10HGD	TO-220	Single	N	NO	100	±20	166	3	4.3	/	4236	854	33
WMB043N10LGS	PDFN5*6-8L	Single	N	NO	100	±20	120	1.8	4.5	6.7	5475	768	22
WMK043N10LGS	TO-220	Single	N	NO	100	±20	120	1.8	4.5	6.7	6095	722	17
WMB043N10HGS	PDFN5*6-8L	Single	N	NO	100	±20	120	3	5	/	6865	740	21
WMK043N10HGS	TO-220	Single	N	NO	100	±20	145	3	5	/	6865	740	21
WMM043N10HGS	TO-263	Single	N	NO	100	±20	145	3	5	/	6868	740	21
WMM053N10HGD	TO-263	Single	N	NO	100	±20	145	3	5.5	/	4050	1400	72
WMK053N10HGD	TO-220	Single	N	NO	100	±20	145	3	5.5	/	4050	1400	72
WMB060N10LGS	PDFN5*6-8L	Single	N	NO	100	±20	95	1.8	6	9	4400	645	20
WMK060N10LGS	TO-220	Single	N	NO	100	±20	120	1.8	6	9	4400	645	20

30V-250V SGT N Channel Power MOSFET													
Part No.	Package	Configura tion	Type	ESD	V <sub>DS</sub>	V <sub>GS</sub> Max	I <sub>D</sub> at 25 °C	V <sub>GS(th)</sub>	R <sub>DS(on)</sub>		Ciss	Coss	Crss
					V	V	A(Max.)	V	V <sub>GS=10V</sub>	V <sub>GS=4.5V</sub>	pF	pF	pF
					(Typ.)	(Max.)	(Max.)	(Typ.)	(Max.)	(Max.)	(Typ.)	(Typ.)	(Typ.)
WMB060N10HGS	PDFN5*6-8L	Single	N	NO	100	±20	95	3	6	/	4350	628	19
WMK060N10HGS	TO-220	Single	N	NO	100	±20	120	3	6	/	4350	628	19
WMM060N10HGS	TO-263	Single	N	NO	100	±20	120	3	6	/	4350	628	19
WMB080N10LG2	PDFN5*6-8L	Single	N	NO	100	±20	74	1.8	8	11	1920	359	9.7
WMK080N10LG2	TO-220	Single	N	NO	100	±20	82	1.8	8	11	1920	359	9.7
WMS080N10LG2	SOP-8L	Single	N	NO	100	±20	15	1.8	9.2	12	1915	350	9.2
WMB080N10HG2	PDFN5*6-8L	Single	N	NO	100	±20	74	3	8	/	2250	370	8.5
WMO080N10HG2	TO-252	Single	N	NO	100	±20	85	3	8	/	1920	395	8
WML080N10HG2	TO-220F	Single	N	NO	100	±20	42	3	8.8	/	1965	385	9
WMO080N10HG2	TO-220F-NL	Single	N	NO	100	±20	42	2.8	8.8	/	1740	395	7.5
WMQ099N10LG2	PDFN3*3-8L	Single	N	NO	100	±20	47	1.8	11	14	1620	300	5.5
WMB099N10LGS	PDFN5*6-8L	Single	N	NO	100	±20	70	1.8	9.9	14	3345	285	19
WMO099N10LGS	TO-252	Single	N	NO	100	±20	70	1.8	9.9	14	3345	285	19
WMK099N10LGS	TO-220	Single	N	NO	100	±20	75	1.8	9.9	14	3345	285	19
WMB099N10HGS	PDFN5*6-8L	Single	N	NO	100	±20	68	3	9.9	/	3520	300	20
WMO099N10HGS	TO-252	Single	N	NO	100	±20	68	3	9.9	/	3520	300	20
WMK099N10HGS	TO-220	Single	N	NO	100	±20	72	3	9.9	/	3520	300	20
WML099N10HGS	TO-220F	Single	N	NO	100	±20	37	3	9.9	/	3520	300	20
WMS119N10LG2	SOP-8L	Single	N	NO	100	±20	11.5	1.8	13	17.5	1170	210	6.5
WMQ119N10LG2	PDFN3*3-8L	Single	N	NO	100	±20	42	1.8	13	17.5	1170	210	6.5
WMB119N10LG2	PDFN5*6-8L	Single	N	NO	100	±20	50	1.8	13	17.5	1170	210	6.5
WMP119N10LG2	TO-251	Single	N	NO	100	±20	55	1.8	13	17.5	1170	210	6.5
WMS175N10LG2	SOP-8L	Single	N	NO	100	±20	10	1.8	18.5	26	868	172	6
WMQ175N10LG2	PDFN3*3-8L	Single	N	NO	100	±20	30	1.8	17	24	1190	303	9.1
WMB175N10LG2	PDFN5*6-8L	Single	N	NO	100	±20	44	1.8	17	24	1190	303	9.1
WMO175N10LG2	TO-252	Single	N	NO	100	±20	44	1.7	17.5	25	1170	355	11





30V-250V SGT N Channel Power MOSFET													
Part No.	Package	Configura tion	Type	ESD	V <sub>DS</sub>	V <sub>GS</sub> Max	I <sub>D</sub> at 25 °C	V <sub>GS</sub> (th)	R <sub>DS(on)</sub>		Ciss	Coss	Crss
					V	V	A(Max.)	V	V <sub>GS</sub> =10V	V <sub>GS</sub> =4.5V	pF (Typ.)	pF (Typ.)	pF (Typ.)
WMK175N10LG2	TO-220	Single	N	NO	100	±20	44	1.7	17.5	25	1140	430	10.5
WMB175N10HG2	PDFN5*6-8L	Single	N	NO	100	±20	44	3	17.5	/	1175	355	11
WMO175N10HG2	TO-252	Single	N	NO	100	±20	44	3	17.5	/	1175	355	11
WMK175N10HG2	TO-220	Single	N	NO	100	±20	44	3	17.5	/	1175	355	11
WMK049N12HG2	TO-220	Single	N	NO	120	±20	170	3	4.9	/	5150	595	19
WMM049N12HG2	TO-263	Single	N	NO	120	±20	170	3	4.9	/	5150	595	19
WMB049N12HG2	PDFN5*6-8L	Single	N	NO	120	±20	180	3	4.9	/	4345	493	20
WMK058N12HG2	TO-220	Single	N	NO	120	±20	160	3	5.8	/	4300	525	11
WMM058N12HG2	TO-263	Single	N	NO	120	±20	160	3	5.8	/	7725	448	15.8
WMB072N12LG2	PDFN5*6-8L	Single	N	NO	120	±20	90	1.95	7.2	10	3750	471	12
WMK072N12LG2	TO-220	Single	N	NO	120	±20	125	1.95	7.2	10	3750	985	21
WMB072N12HG2	PDFN5*6-8L	Single	N	NO	120	±20	125	3	7.2	/	3600	530	19
WMK072N12HG2	TO-220	Single	N	NO	120	±20	125	3	7.2	/	3600	530	19
WMB125N12LG2	PDFN5*6-8L	Single	N	NO	120	±20	61	2	12.5	17	2350	285	15
WMK125N12LG2	TO-220	Single	N	NO	120	±20	74	2	12.5	17	2075	235	9
WML125N12LG2	TO-220F	Single	N	NO	120	±20	35	2	12.5	17	2075	235	9
WMK161N15T2	TO-220	Single	N	NO	150	±20	161	3	6	/	6220	480	11
WMM161N15T2	TO-263	Single	N	NO	150	±20	161	3	6	/	6220	480	11
WML071N15HG2	TO-220F	Single	N	NO	150	±20	120	3	7.1	/	5270	392	17
WMK071N15HG2	TO-220	Single	N	NO	150	±20	135	3	7.1	/	5470	389	13
WMM071N15HG2	TO-263	Single	N	NO	150	±20	135	3	7.1	/	5470	389	13
WMB115N15HG2	PDFN5*6-8L	Single	N	NO	150	±20	74	3	11.5	/	3420	262	9.2
WMK115N15HG2	TO-220	Single	N	NO	150	±20	90	3	11.5	/	3420	262	9.2
WMM115N15HG2	TO-263	Single	N	NO	150	±20	90	3	11.5	/	3520	262	9.8
WMB198N15HG2	PDFN5*6-8L	Single	N	NO	150	±20	47	3	19.8	/	2150	145	12
WMK198N15HG2	TO-220	Single	N	NO	150	±20	58	3	19.8	/	2150	145	12

30V-250V SGT N Channel Power MOSFET													
Part No.	Package	Configura tion	Type	ESD	V <sub>DS</sub>	V <sub>GS</sub> Max	I <sub>D</sub> at 25 °C	V <sub>GS</sub> (th)	R <sub>DS(on)</sub>		Ciss	Coss	Crss
					V	V	A(Max.)	V	V <sub>GS</sub> =10V	V <sub>GS</sub> =4.5V	pF (Typ.)	pF (Typ.)	pF (Typ.)
WMS690N15HG2	SOP-8L	Single	N	NO	150	±20	5	3	69	/	585	48	2.5
WMB690N15HG2	PDFN5*6-8L	Single	N	NO	150	±20	20	3	65	/	655	45.5	2.7
WMO690N15HG2	TO-252	Single	N	NO	150	±20	20	3	65	/	655	45.5	2.7
WMB340N20HG2	PDFN5*6-8L	Single	N	NO	200	±20	40	3	34	/	1702	141	8.5
WMK340N20HG2	TO-220	Single	N	NO	200	±20	50	3	34	/	1712	141	8
WMM340N20HG2	TO-263	Single	N	NO	200	±20	50	3	34	/	1712	141	8

Multi-Channel MOSFET Power MOSFET													
Part No.	Package	Configura tion	Type	ESD	V <sub>DS</sub>	V <sub>GS</sub> Max	I <sub>D</sub> at 25 °C	V <sub>GS</sub> (th)	R <sub>DS(on)</sub>		Ciss	Coss	Crss
					V	V	A(Max.)	V	V <sub>GS</sub> =10V	V <sub>GS</sub> =4.5V	pF (Typ.)	pF (Typ.)	pF (Typ.)
WM02DN560Q	DFN3*3-8L	Dual-N	N	YES	20	±12	20	0.55	/	5.8	3165	380	325
WM02DN095C	DFN2*3-6L	Dual-N	N	YES	20	±12	9.5	0.62	/	7.4	1647	170	148
WM02DN110C	DFN2*3-6L	Dual-N	N	YES	20	±12	11	0.62	/	7.5	1767	184	155
WM02DN085C	DFN2*3-6L	Dual-N	N	YES	20	±12	8.5	0.62	/	8.2	1612	162	140
WM02DN080C	DFN2*3-6L	Dual-N	N	YES	20	±12	8	0.62	/	13	730	85	75
WM4C62160A	CSP1.5*1.5	Dual-N	N	YES	20	±12	5	0.85	/	22	655	45.5	2.7
WMS09DP03T1	SOP-8L	Dual-P	P	NO	-30	±20	-9	-1.7	17	25	2710	331	279
WMS098DN06LG2	SOP-8L	Dual-N	N	NO	60	±20	13	1.7	12	16.5	1055	422	21
WMB098DN06LG2	PDFN5*6-8L	Dual-N	N	NO	60	±20	13	1.7	11	16	1055	422	21
WMQ40DN03T1	PDFN3*3-8L	Dual-N	N	NO	30	±20	40	1.6	9	14	1390	178	141
WMS14DN03T1	SOP-8L	Dual-N	N	NO	30	±20	14	1.5	9	13	1011	170	152
WMQ36DN03T1	PDFN3*3-8L	Dual-N	N	NO	30	±20	36	1.7	12.8	17	825	121	82
WMB02DN10T1	PDFN5*6-8L	Dual-N	N	NO	100	±20	2.5	1.7	290	310	395	28	22
WMS08DN06TS	SOP-8L	Dual-N	N	NO	60	±20	8	1.7	38	46	1315	57	46
WMS10DN03T1	SOP-8L	Dual-N	N	NO	30	±20	10	1.8	18	30	500	70	46



Multi-Channel MOSFET Power MOSFET																
Part No.	Package	Configura-tion	Type	ESD	V <sub>DS</sub>	V <sub>GS</sub> Max	I <sub>D</sub> at 25 °C	V <sub>GS</sub> (th)		R <sub>DS(on)</sub>		Ciss	Coss	Crss		
								Typ.	V <sub>GS</sub> =10V	V <sub>GS</sub> =4.5V	pF (Typ.)				pF (Typ.)	pF (Typ.)
								V	A(Max.)	V						
WMB03DN06T1	PDFN5*6-8L	Dual-N	N	NO	60	±20	3.5	1.3	100	110	410	32	25			
WMB31430DN	PDFN5*6-8L	Dual-N	N	NO	30	±20	130	1.6	1.3	1.8	4877	2440	248			
				NO	30	±20	56	1.6	4.6	6.5	1552	700	120			
WMB042DN03LG2	PDFN5*6-8L	Dual-N	N	NO	30	±20	50	1.7	4.2	6.5	1390	680	53			
				NO	30	±20	45	1.7	5.5	9	1100	430	60			
WMB190DN10LG2	PDFN5*6-8L	Dual-N	N	NO	100	±20	33	1.7	19	25	998	370	12			
WMS08DH04T1	SOP-8L	N+P	N	NO	40	±20	8	1.5	18	22.5	1090	92	78			
			P	NO	-40	±20	-6	-1.7	45	58	990	120	90			

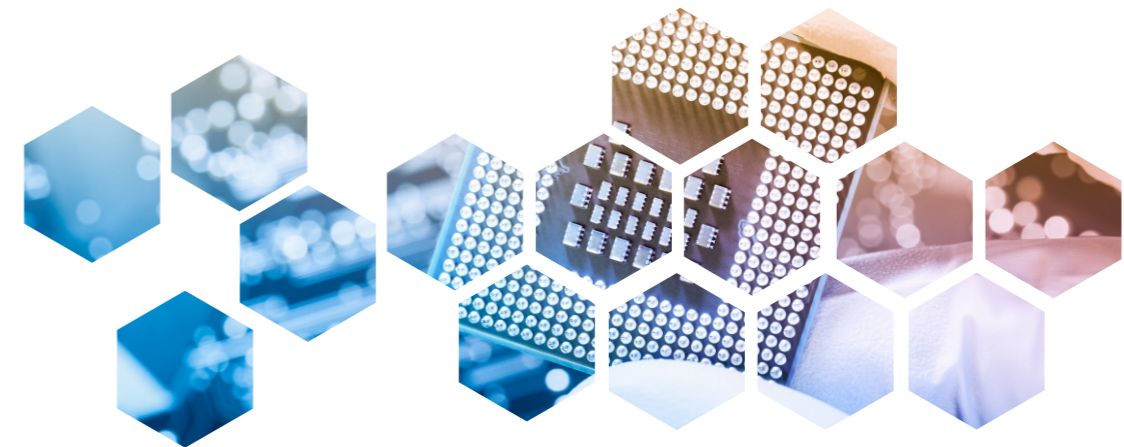
-60V-100V Small Signal MOSFET														
Part No.	Package	Type	ESD	V <sub>DS</sub>	V <sub>GS</sub> Max	I <sub>D</sub> at 25 °C	V <sub>GS</sub> (th)		R <sub>DS(on)</sub>					
							V(Min.)	V(Max.)	V <sub>GS</sub> =10V		V <sub>GS</sub> =4.5V		V <sub>GS</sub> =2.5V	
							V	A(Max.)	mΩ (Typ.)	mΩ (Max.)	mΩ (Typ.)	mΩ (Max.)	mΩ (Typ.)	mΩ (Max.)
WM06P17MR	SOT-23	P	NO	-60	±20	-1.7	-1	-2.5	175	220	190	270	/	/
WM05P01G	SOT-323	P	NO	-50	±20	-0.13	-0.8	-2.5	1700	6000	2000	7000	/	/
WM05P01M	SOT-23	P	NO	-50	±20	-0.13	-0.9	-2	1700	6000	2000	7000	/	/
WM05P20M	SOT-23	P	NO	-50	±20	-2	-1	-3	130	180	170	250	/	/
WM05P02F	DFN1006-3L	P	YES	-50	±20	-0.25	-1	-2	2200	6000	2600	7000	/	/
WM04P50M	SOT-23	P	NO	-40	±20	-5	-1	-3	64	85	85	125	/	/
WM04P56M	SOT-23	P	NO	-40	±20	-5.6	-1	-3	42	55	52	65	/	/
WM04P56M2	SOT-23-3L	P	NO	-40	±20	-5.6	-1	-3	38	50	48	62	/	/
WM03P19M	SOT-23	P	NO	-30	±20	-1.9	-1	-3	90	190	135	330	/	/
WM03P27M	SOT-23	P	NO	-30	±20	-2.7	-1	-3	65	88	100	138	/	/
WM03P42M	SOT-23	P	NO	-30	±12	-4.2	-0.7	-1.3	43	60	56	75	72	90

Part No.	Package	Type	ESD	V <sub>DS</sub>	V <sub>GS</sub> Max	I <sub>D</sub> at 25 °C	V <sub>GS</sub> (th)		R <sub>DS(on)</sub>					
							V(Min.)	V(Max.)	V <sub>GS</sub> =10V		V <sub>GS</sub> =4.5V		V <sub>GS</sub> =2.5V	
							V	A(Max.)	mΩ (Typ.)	mΩ (Max.)	mΩ (Typ.)	mΩ (Max.)	mΩ (Typ.)	mΩ (Max.)
WM03P42M2	SOT-23-3L	P	NO	-30	±12	-4.2	-0.7	-1.3	43	60	55	70	60	90
WM03P51A	SOP-8L	P	NO	-30	±20	-5.1	-1	-2	42	60	60	82	/	/
WM03P41M	SOT-23	P	NO	-30	±20	-4.1	-1	-2.5	42	60	54	85	/	/
WM03P41M2	SOT-23-3L	P	NO	-30	±20	-4.1	-1	-2.5	42	60	54	85	/	/
WM03P60M2	SOT-23-3L	P	NO	-30	±20	-6	-1	-2	30	40	40	60	/	/
WM03P56M2	SOT-23-3L	P	NO	-30	±20	-5.6	-1	-3	22	35	30	45	/	/
WM03P91A	SOP-8L	P	NO	-30	±20	-9.1	-1	-3	17	24	23	35	/	/
WM02P06F	DFN1006-3L	P	YES	-20	±10	-0.66	-0.3	-1.1	/	/	450	520	650	780
WM02P06G	SOT-323	P	YES	-20	±12	-0.66	-0.3	-1.1	/	/	450	520	650	780
WM02P06L	SOT-523	P	YES	-20	±10	-0.66	-0.3	-1.1	/	/	450	520	680	780
WM02P06H	SOT-723	P	YES	-20	±10	-0.66	-0.3	-1.1	/	/	450	520	650	780
WM02P23M	SOT-23	P	NO	-20	±10	-2.3	-0.4	-1.2	/	/	90	115	115	145
WM02P14G	SOT-323	P	NO	-20	±12	-1.4	-0.5	-1	/	/	85	100	110	140
WM02P26M	SOT-23	P	NO	-20	±8	-2.6	-0.4	-1	/	/	60	90	75	130
WM02P30M	SOT-23	P	NO	-20	±12	-3	-0.4	-1	/	/	50	70	60	90
WM02P41M	SOT-23	P	NO	-20	±12	-4.1	-0.3	-1	/	/	36	45	49	57
WM02P40M	SOT-23	P	YES	-20	±8	-4	-0.3	-1	/	/	30	48	40	60
WM02P40M3	SOT-23-6L	P	YES	-20	±8	-4	-0.3	-1	/	/	30	48	40	60
WM02P56M	SOT-23	P	NO	-20	±12	-5.6	-0.4	-1	/	/	28	38	36	49
WM02P56M2	SOT-23-3L	P	NO	-20	±12	-5.6	-0.4	-1	/	/	18	23	22	30
WM02P60M2	SOT-23-3L	P	NO	-20	±10	-6	-0.4	-1	/	/	15	23	19	30
WM01P41M	SOT-23	P	NO	-12	±8	-4.1	-0.5	-0.9	/	/	30	45	40	60
WM01P60M	SOT-23	P	NO	-12	±8	-6	-0.4	-1	/	/	20	28	30	40
WM02N08F	DFN1006-3L	N	YES	20	±10	0.75	0.35	1.1	/	/	190	380	260	450
WM02N08GR	SOT-323	N	YES	20	±12	0.75	0.3	1.1	/	/	190	380	260	450
WM02N08LS	SOT-523	N	YES	20	±12	0.75	0.35	1.1	/	/	190	380	260	450
WM02N08H	SOT-723	N	YES	20	±12	0.75	0.35	1.1	/	/	190	380	260	450



Part No.	Package	Type	ESD	V <sub>DS</sub>	V <sub>ES</sub> Max	I <sub>s</sub> at 25 °C	V <sub>GS</sub> (th)		R <sub>DS(on)</sub>					
									V <sub>GS</sub> =10V		V <sub>GS</sub> =4.5V		V <sub>GS</sub> =2.5V	
									V	V	A(Max.)	V(Min.)	V(Max.)	mΩ (Typ.)
WM02N25M	SOT-23	N	NO	20	±10	2.5	0.4	1	/	/	54	80	76	120
WM02N20F	DFN1006-3L	N	NO	20	±10	2.5	0.4	1	/	/	55	85	77	125
WM02N20G	SOT-323	N	NO	20	±10	2	0.4	1.2	/	/	45	70	60	110
WM02N28M	SOT-23	N	NO	20	±10	2.8	0.4	1.2	/	/	40	60	55	100
WM02N31M	SOT-23	N	NO	20	±8	3.1	0.4	1.2	/	/	33	45	43	60
WM02N45M	SOT-23	N	NO	20	±10	4.5	0.5	0.9	/	/	21	30	26	40
WM02N50M	SOT-23	N	NO	20	±8	5	0.45	1	/	/	16	24	21	35
WM02N50M2	SOT-23-3L	N	NO	20	±8	5	0.45	1	/	/	16	24	21	35
WM02N70M	SOT-23	N	YES	20	±12	7	0.4	1	/	/	14	25	18	30
WM02N75M2	SOT-23-3L	N	NO	20	±10	7.5	0.3	1	/	/	10	16	13	23
WM03N09F	DFN1006-3L	N	YES	30	±12	0.93	0.5	1.5	/	/	320	500	410	600
WM03N06M	SOT-23	N	YES	30	±12	0.6	0.7	1.1	/	/	310	500	400	680
WM03N01L	SOT-523	N	YES	30	±20	0.1	0.8	1.45	1000	3000	1900	4000	/	/
WM03N01G	SOT-323	N	YES	30	±20	0.1	0.8	1.45	1100	3000	1500	4000	/	/
WM03N01H	SOT-723	N	YES	30	±20	0.1	0.8	1.45	1100	3000	1500	4000	/	/
WM03N32M	SOT-23	N	NO	30	±20	3.2	1	2	36	47	49	65	/	/
WM03N58M2	SOT-23-3L	N	NO	30	±12	5.8	0.7	1.4	23	35	26	40	40	52
WM03N57M	SOT-23	N	NO	30	±20	5.8	1	2.5	25	36	28	45	/	/
WM03N58M	SOT-23	N	NO	30	±12	5.8	0.7	1.4	23	35	26	40	40	52
WM04N50M	SOT-23	N	NO	40	±20	5	1	2.5	29	45	41	60	/	/
WM05N02M	SOT-23	N	NO	50	±20	0.2	0.5	1.5	1100	3500	1200	6000	/	/
WM05N02G	SOT-323	N	NO	50	±20	0.22	0.8	1.45	1100	3500	1200	6000	/	/
WM06N03F	DFN1006-3L	N	YES	60	±20	0.45	1	2.5	1300	3000	1400	4000	/	/
WM06N03M	SOT-23	N	YES	60	±20	0.34	1	2.5	1300	2100	1400	2800	/	/
WM06N01M	SOT-23	N	NO	60	±20	0.115	1	2.5	1300	3000	1400	4000	/	/
WM06N03G	SOT-323	N	YES	60	±20	0.34	1	2.5	1300	2100	1400	2800	/	/

Part No.	Package	Type	ESD	V <sub>DS</sub>	V <sub>ES</sub> Max	I <sub>s</sub> at 25 °C	V <sub>GS</sub> (th)		R <sub>DS(on)</sub>					
									V <sub>GS</sub> =10V		V <sub>GS</sub> =4.5V		V <sub>GS</sub> =2.5V	
									V	V	A(Max.)	V(Min.)	V(Max.)	mΩ (Typ.)
WM06N03L	SOT-523	N	YES	60	±20	0.34	1	2	1300	2100	1400	2800	/	/
WM06N03H	SOT-723	N	YES	60	±20	0.34	1	2	1300	2100	1400	2800	/	/
WM06N30M	SOT-23	N	NO	60	±20	3	1	2.5	75	100	90	110	/	/
WM10N02M	SOT-23	N	NO	100	±20	0.17	1	2.5	3400	6000	3700	9000	/	/
WM10N02G	SOT-323	N	NO	100	±20	0.17	1.5	2.5	3400	6000	3700	9000	/	/
WM10N20M	SOT-23	N	NO	100	±20	2	1.1	3	245	280	260	310	/	/
WM10N33M	SOT-23	N	NO	100	±20	3.3	1	2.5	96	130	120	160	/	/
WM10N35M2	SOT-23-3L	N	NO	100	±20	3.5	1	2.5	78	100	92	120	/	/





Multi-Channel Small Signal MOSFET

Part No.	Package	Type	ESD	V <sub>DS</sub>	V <sub>DS</sub> Max	I <sub>S</sub> at 25 °C	V <sub>GS(th)</sub>		R <sub>DS(on)</sub>					
									V <sub>GS</sub> =10V		V <sub>GS</sub> =4.5V		V <sub>GS</sub> =2.5V	
							V	V	A(Max.)	V(Min.)	V(Max.)	mΩ (Typ.)	mΩ (Max.)	mΩ (Typ.)
WM05DP01D	SOT-363	Dual P	NO	-50	±20	-0.13	-0.9	-2	1700	8000	1900	10000	/	/
WM02DP06D	SOT-363	Dual P	YES	-20	±12	-0.66	-0.3	-1.1	/	/	450	520	650	780
WM02DP06T	SOT-563	Dual P	YES	-20	±12	-0.66	-0.3	-1.1	/	/	450	520	650	780
WM02DN08T	SOT-563	Dual N	YES	20	±12	0.75	0.35	1.1	/	/	190	380	260	450
WM02DN08DR	SOT-363	Dual N	YES	20	±12	0.75	0.3	1.1	/	/	190	380	260	450
WM06DN03D	SOT-363	Dual N	YES	60	±20	0.34	1	2.5	1300	3000	1400	4000	/	/
WM03DP50A	SOP-8L	Dual P	NO	-30	±20	-5	-1	-2.1	40	60	57	90	/	/
WM02DN48M3	SOT-23-6L	Dual N	NO	20	±12	4.8	0.5	1.2	/	/	20	30	25	40
WM02DN48A	SOP-8L	Dual N	NO	20	±12	4.8	0.5	1.2	/	/	20	30	25	40
WM02DN70A	TSSOP-8L	Dual N	YES	20	±12	7	0.6	1	11	17	12	19	15	23
WM03DN85A	SOP-8L	Dual N	NO	30	±20	8.5	1	2.5	19	23	25	32	/	/
WM02DN50M3	SOT-23-6L	Dual N	NO	20	±12	5	0.5	1.2	/	/	21	27	26	35
WM02DN60M3	SOT-23-6L	Dual N	NO	20	±12	6	0.7	1.2	/	/	15	20	19	27
WM02DN70M3	SOT-23-6L	Dual N	YES	20	±12	7	0.6	1	11	20	12	22	15	26
WM02DH08D	SOT-363	N+P	YES	20	±12	0.75	0.35	1.1	/	/	190	380	260	450
			YES	-20	±12	-0.66	-0.3	-1.1	/	/	450	520	650	780
WM02DH08T	SOT-563	N+P	YES	20	±12	0.75	0.35	1.1	/	/	190	380	260	450
			YES	-20	±12	-0.66	-0.3	-1.1	/	/	450	520	650	780
WM02DH50M3	SOT-23-6L	N+P	NO	20	±8	5	0.5	1	/	/	35	55	40	75
			NO	-20	±8	-4	-0.5	-1	/	/	70	90	90	120
WM03DH34M3	SOT-23-6L	N+P	NO	30	±12	3.4	1	3	36	47	49	65	/	/
			NO	-30	±12	-2.3	-1	-3	65	88	100	138	/	/
WM03DH60A	SOP-8L	N+P	NO	-30	±20	-6	-1	-3	17	24	23	35	/	/
			NO	30	±20	5.8	1	2.5	25	36	35	45	/	/



- 上海: 总部** 研发制造
- 西安** 研发中心
- 无锡** 研发中心
- 长春** 研发中心
- 台北** 研发&销售&应用
- 成都** 研发&销售
- 深圳** 销售&应用
- 合肥** 销售&应用
- 北京** 销售
- 韩国** 销售
- 欧洲** 销售
- 美国** 销售(筹建中)